

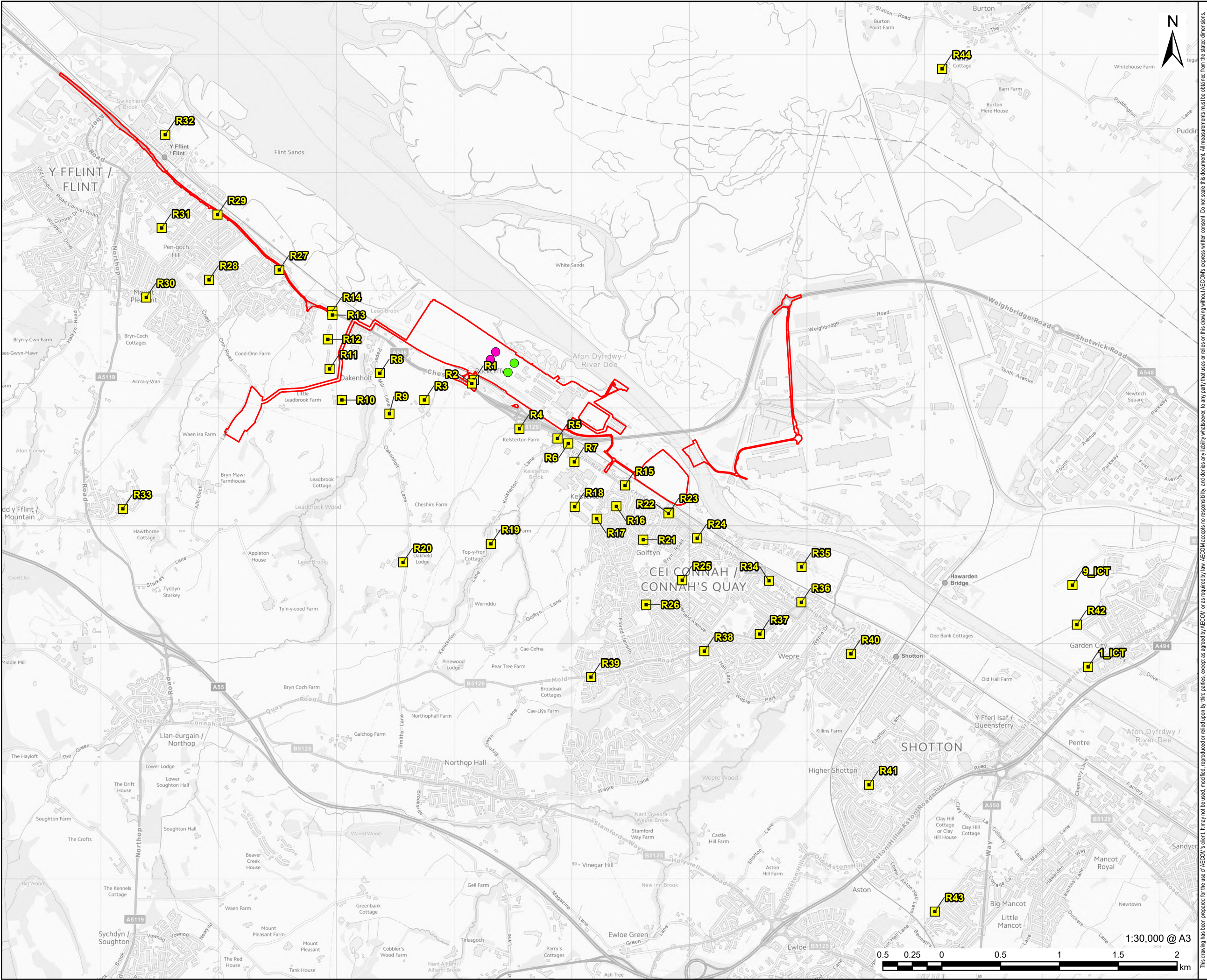
# Connah's Quay Low Carbon Power

Environmental Statement Volume III  
Figure 8-2: Operational Phase Assessment - Air Quality Study Area and Human Health Receptors

Planning Inspectorate Reference: EN010166  
Document Reference: EN010166/APP/6.3  
Planning Act 2008 (as amended)  
Infrastructure Planning (Applications: Prescribed Forms and Procedure) Regulations 2009 - Regulation 5(2)(a)  
Revision 00

August 2025





This drawing has been prepared for the use of AECOM's client. It may not be used, modified, reproduced or relied upon by third parties, except as signed by AECOM or as required by law. AECOM accepts no responsibility, and denies any liability whatsoever, to any party that uses or relies on this drawing without AECOM's express written consent. Do not scale this document. All measurements must be obtained from the stated dimensions.



**PROJECT**  
**Connah's Quay Low Carbon Power**

**CONSULTANT**  
AECOM Limited  
The Colmore Building  
Colmore Circus, Queensway  
Birmingham, B4 6AT  
www.aecom.com

**LEGEND**

- Order limits
- Absorber Stack
- Bypass Stack
- Human Health Receptor

**NOTES**  
Air Quality Study Area(s), including for specific receptors shown, defined in Section 8.4 of Chapter 8: Air Quality (ES Volume II).  
© Crown Copyright 2025. All rights reserved.  
Ordnance Survey Licence AC0000808122.  
Contains OS data © Crown copyright 2025.

**ISSUE PURPOSE**  
Environmental Statement

**DATE**  
July 2025

**PROJECT NUMBER**  
60717119

**FIGURE TITLE**  
Operational Phase Assessment – Air Quality Study Area and Human Health Receptors

**FIGURE NUMBER**  
Figure 8-2